

# City of Peterborough Textile Benchmarking Study

Laurie Westaway, Wasteaway

[laurie@Westaway.ca](mailto:laurie@Westaway.ca)



# What is happening to textiles in Peterborough?

# Issues in Waste Management

- Research Project – Trent University
- ~60 students
- 6 Working Groups
  - GIS
  - Waste Audit
  - Policy
  - Stakeholder Communications
    - Residents
    - Non-Profit
    - Commercial/Retail



# Benchmarking Goals

City of Peterborough

- no formal municipal system in place to manage textiles

1. Evaluate existing non-municipal practices
2. Suggest next steps

# GIS



Figure 1: Jake's House Textile Drop Box Locations



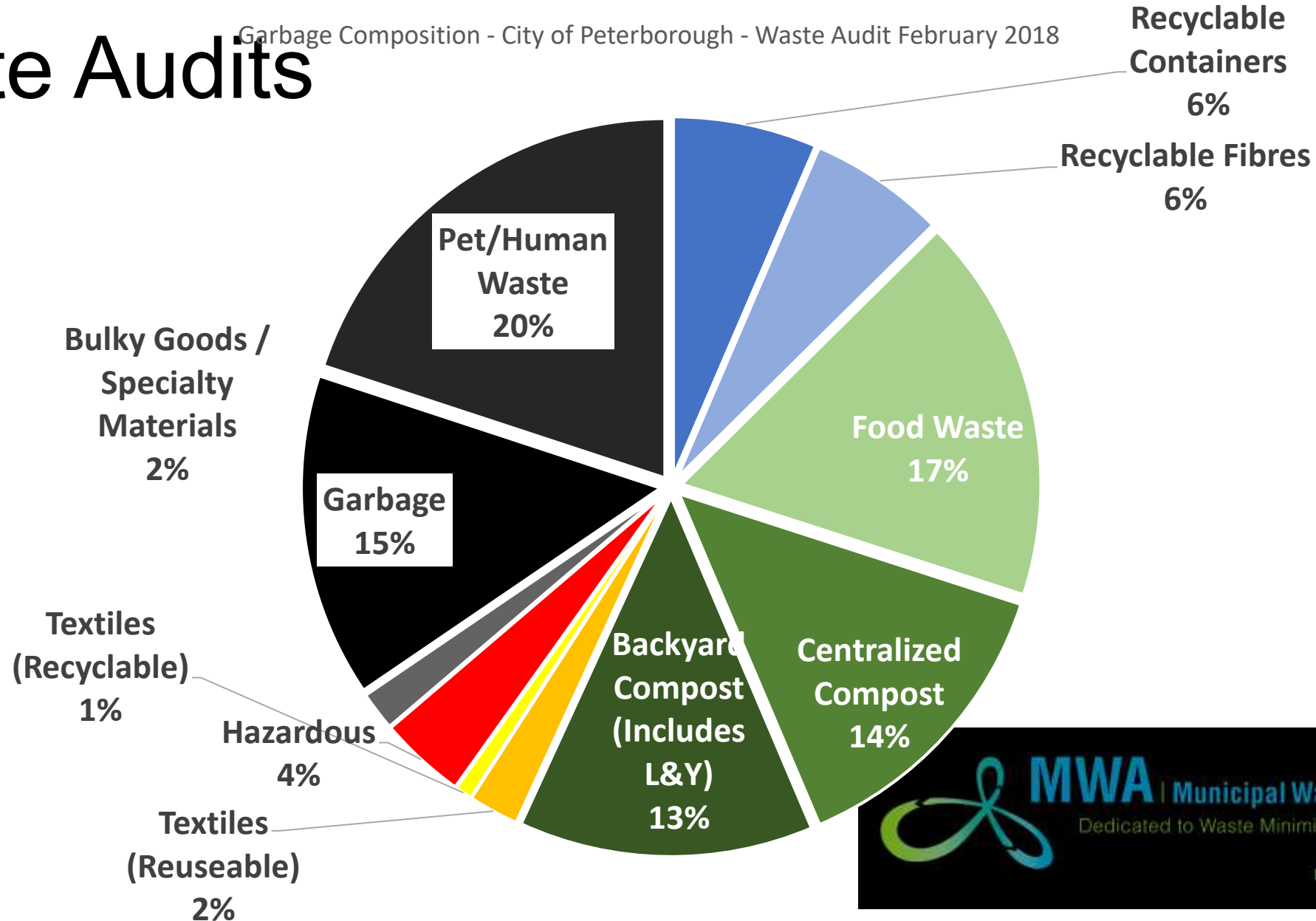
Figure 2: Diabetes Canada Drop Box Locations

# MWA Fall 2018 Conference



## Waste Audits

Garbage Composition - City of Peterborough - Waste Audit February 2018



# Policy

## By-Law Revisions

- Defining textiles
- Strengthen and enhancing partnership
- Establish resilient system for types and placement of bins



# Stakeholder Engagement

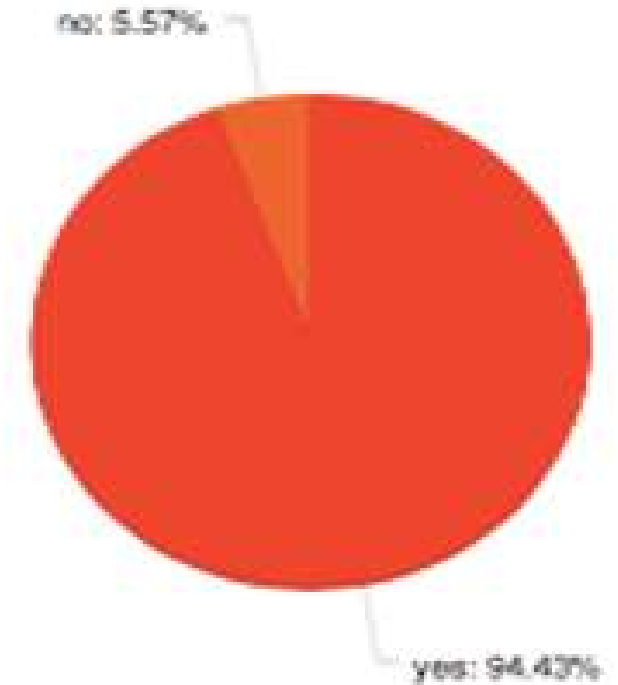
- Are you currently donating unwanted textiles?

Number of participants:

449

424 (94.4%): yes

25 (5.6%): no



# Resident Challenges

- Not knowing what to do with specific materials and/or where to dispose of used textiles.
- Uncertainty of the condition textiles must be in order to be donated.
- Confusion around what to do with textiles that are too damaged to be donated.
- Wanting to understand where donated textiles end up.

# Where does it go?

- “Bob”
- Materials collected and taken to Greater Toronto Area
- “Rag Houses” – MRF’s for clothing
  - Sorted and shipped across North America
  - How much shipped overseas? Due diligence

# Research Outcomes

- Improve existing textile collection bins and systems
- Enhance collaboration with local textile charities
- Increase education and promotion activities on textile donations

# Working with Students

- Group dynamics (flow of students/division of work)
- Communications
- “unpaid labour” vs. awesome learning experience
- Quality of Work
- Commitment from Instructor



Questions?

Laurie Westaway  
Wasteaway  
[laurie@Westaway.ca](mailto:laurie@Westaway.ca)  
705-868-2719

